

RESOLUTION NO. 13-58

**RESOLUTION EXPANDING RURAL SPECIAL
IMPROVEMENT MAINTENANCE DISTRICT #703M
(BEARTOOTH POINTE ESTATES SUBDIVISION)**

WHEREAS, pursuant to §7-12-2161(4), MCA, the Commissioners have the power of changing, by resolution, the boundaries of any maintenance district not more than once a year; and

WHEREAS the boundaries of RSID 703M have not been changed within the last year; and

WHEREAS, it has been determined that properties adjacent to the existing Rural Special Improvement District #703M boundaries are benefited properties accessing the district roads; and

WHEREAS, the benefited property status requires the expansion of boundaries for RSID 703M for the maintenance of streets and storm water drainage within the district; and

WHEREAS, the boundaries of the district will be expanded to include Lots 1 through 4, inclusive, Mountain View Estates Subdivision; Mira Mesa Real Sub, S05, T02 S, R24 E, Lot 1A, AMD TR 1; and Lot 1 Mize Sub located in Yellowstone County, Montana, described in Exhibit B; and

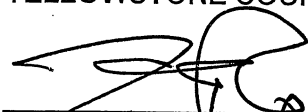
WHEREAS, expanded boundaries of the district are shown in Exhibit A (map).

NOW, THEREFORE, BE IT RESOLVED by the Board of County Commissioners of Yellowstone County, Montana, deeming the public interest or convenience require, intends to expand the following described Rural Special Improvement Maintenance District:

- 1. DESCRIPTION OF IMPROVEMENTS, DESCRIPTION OF MAINTENANCE, METHOD OF ASSESSMENT AND ESTIMATED COSTS.** Assessments collected on behalf of this district shall be used for the maintenance, preservation, and repair of the streets, weed control and snow plowing/ice control located within the boundaries of this district. All of the costs of the district shall be assessed equally on a per lot method for existing and future lots. Assessments will be established annually by the Board of County Commissioners and are subject to adjustment due to cost fluctuations related to maintenance utilization levels and changes in material and labor costs of performing necessary maintenance.
- 2. DURATION.** The district shall be deemed to be perpetual in nature unless absorbed and replaced by another district or municipality.

PASSED AND ADOPTED by the Board of County Commissioners of Yellowstone
County, Montana, this 27th day of August, 2013.

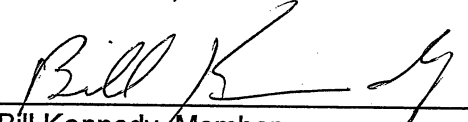
BOARD OF COUNTY COMMISSIONERS
YELLOWSTONE COUNTY, MONTANA



James E. Reno, Chairman

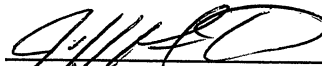


John Ostlund, Member



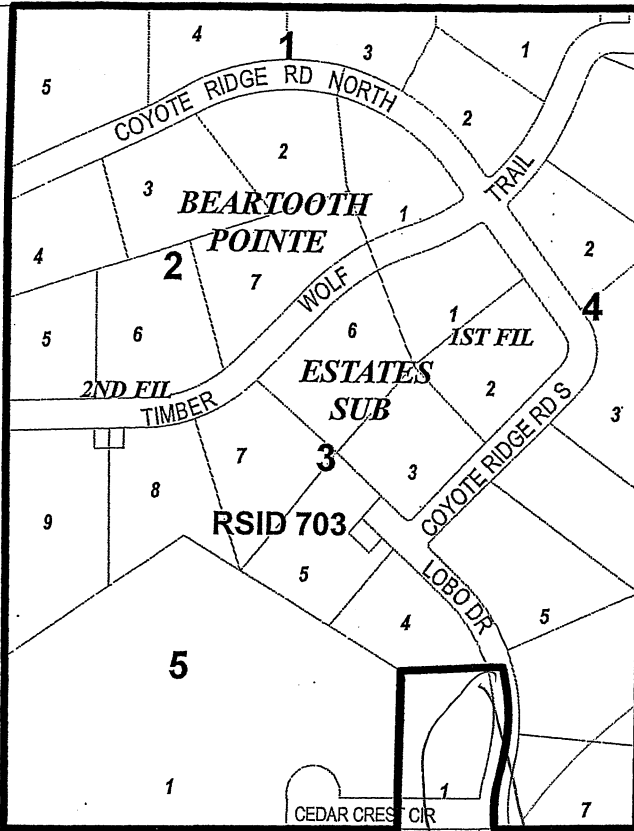
Bill Kennedy, Member

(SEAL)
ATTEST:



Jeff Martin, Clerk & Recorder
Yellowstone County, Montana

EXHIBIT A



*Private roads
not maintained
by RSID*
UNPLATTED

Proposed rsid expansion

MIZE SUB

MOUNTAIN VIEW
ESTATES

MIRA MESA
REAL SUB

BEAR TOOTH
VIEW SUB

TR 2A1

1A

BEAR-
TOOTH
VIEW
PARK

TR 2A2

TR 6A1

SAGE CIR

MURRAY

IST FIL

HEIGHTS

CS 353
AM TR A1

CS 2847

BEAR TOOTH DR

BEAR TOOTH

TR 1

CS 496

AM

HIGHLINE DR

EXHIBIT B
LEGAL DESCRIPTIONS
RSID 703M - Beartooth Pointe Estates Subdivision - Road

PROPERTY LEGAL DESCRIPTIONS

- 1 B03131 BEARTOOTH POINT ESTATES SUB 1ST, S05, T02 S, R24 E, BLOCK 1, Lot 1, 1.108 AC
- 2 B03132 BEARTOOTH POINT ESTATES SUB 1ST, S05, T02 S, R24 E, BLOCK 1, Lot 2
- 3 B03133 BEARTOOTH POINT ESTATES SUB 1ST, S05, T02 S, R24 E, BLOCK 2, Lot 1
- 4 B03134 BEARTOOTH POINT ESTATES SUB 2ND, S05, T02 S, R24 E, BLOCK 2, Lot 2
- 5 B03135 BEARTOOTH POINT ESTATES SUB 1ST, S05, T02 S, R24 E, BLOCK 3, Lot 1
- 6 B03136 BEARTOOTH POINT ESTATES SUB 1ST, S05, T02 S, R24 E, BLOCK 3, Lot 2
- 7 B03137 BEARTOOTH POINT ESTATES SUB 1ST, S05, T02 S, R24 E, BLOCK 3, Lot 3
- 8 B03138 BEARTOOTH POINT ESTATES SUB 1ST, S05, T02 S, R24 E, BLOCK 4, Lot 1
- 9 B03139 BEARTOOTH POINT ESTATES SUB 1ST, S05, T02 S, R24 E, BLOCK 4, Lot 2
- 10 B03140 BEARTOOTH POINT ESTATES SUB 1ST, S05, T02 S, R24 E, BLOCK 4, Lot 3
- 11 B03141 BEARTOOTH POINT ESTATES SUB 1ST, S05, T02 S, R24 E, BLOCK 4, Lot 4
- 12 B03142 BEARTOOTH POINT ESTATES SUB 1ST, S05, T02 S, R24 E, BLOCK 4, Lot 5
- 13 B03143 BEARTOOTH POINT ESTATES SUB 1ST, S05, T02 S, R24 E, BLOCK 4, Lot 6
- 14 B03144 BEARTOOTH POINT ESTATES SUB 1ST, S05, T02 S, R24 E, BLOCK 6, Lot 7
- 15 B03145 BEARTOOTH POINT ESTATES SUB 1ST, S05, T02 S, R24 E, BLOCK 5, Lot 1
- 16 B03153 BEARTOOTH POINT ESTATES SUB 2ND, S05, T02 S, R24 E, BLOCK 1, Lot 3
- 17 B03154 BEARTOOTH POINT ESTATES SUB 2ND, S05, T02 S, R24 E, BLOCK 1, Lot 4
- 18 B03155 BEARTOOTH POINT ESTATES SUB 2ND, S05, T02 S, R24 E, BLOCK 1, Lot 5
- 19 B03156 BEARTOOTH POINT ESTATES SUB 2ND, S05, T02 S, R24 E, BLOCK 2, Lot 3
- 20 B03157 BEARTOOTH POINT ESTATES SUB 2ND, S05, T02 S, R24 E, BLOCK 2, Lot 4
- 21 B03158 BEARTOOTH POINT ESTATES SUB 2ND, S05, T02 S, R24 E, BLOCK 2, Lot 5
- 22 B03159 BEARTOOTH POINT ESTATES SUB 2ND, S05, T02 S, R24 E, BLOCK 2, Lot 6
- 23 B03160 BEARTOOTH POINT ESTATES SUB 2ND, S05, T02 S, R24 E, BLOCK 2, Lot 7, 1.448 AC (06)
- 24 B03161 BEARTOOTH POINT ESTATES SUB 2ND, S05, T02 S, R24 E, BLOCK 3, Lot 4
- 25 B03162 BEARTOOTH POINT ESTATES SUB 2ND, S05, T02 S, R24 E, BLOCK 3, Lot 5
- 26 B03163 BEARTOOTH POINT ESTATES SUB 2ND, S05, T02 S, R24 E, BLOCK 3, Lot 6
- 27 B03164 BEARTOOTH POINT ESTATES SUB 2ND, S05, T02 S, R24 E, BLOCK 3, Lot 7
- 28 B03165 BEARTOOTH POINT ESTATES SUB 2ND, S05, T02 S, R24 E, BLOCK 3, Lot 8
- 29 B03166 BEARTOOTH POINT ESTATES SUB 2ND, S05, T02 S, R24 E, BLOCK 3, Lot 9
- 30 C12603 MIRA MESA REAL, S05, T02 S, R24 E, Lot 1A, AMD TR 1 (11.014 AC) (04)
- 31 C12604 MOUNTAIN VIEW ESTATES, S05, T02 S, R24 E, Lot 1
- 32 C12605 MOUNTAIN VIEW ESTATES, S05, T02 S, R24 E, Lot 2
- 33 C12606 MOUNTAIN VIEW ESTATES, S05, T02 S, R24 E, Lot 3
- 34 C12607 MOUNTAIN VIEW ESTATES, S05, T02 S, R24 E, Lot 4
- 35 C12681 MIZE SUBD, S05, T02 S, R24 E, Lot 1